

Den roamin'

Celebrity lifestyles and smooth marriages don't always go hand in hand — as David Beckham will testify.

But Becks could learn a thing or two about getting through the rough patches from ex-Corrie star Denise Welch and her hubby

Tim Healy.

Last summer, Denise admitted to having a fling while filming the BBC hit *Down To Earth*. But today her 15-year marriage to the *Auf Wiedersehen, Pet* actor has never been stronger.

"We understand the pressures and the strains we go through when we are working as well as the pitfalls of the industry," sighs Denise, 46.

And Tim, 52, is quick to jump to his wife's defence.

"Nothing is as black and

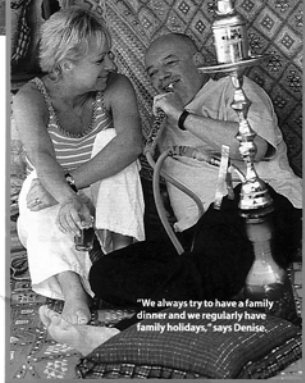
"We try to work it so that one of us is always at home for the children," says Denise, with son Louis.

We're Auf to Africa, pet

After a rocky few months, Denise Welch and hubby Tim Healy relax in Tunisia on a family holiday with their two sons.

By Steven Smith





"We always try to have a family dinner and we regularly have family holidays," says Denise.

white as it looks," he nods. "A good marriage is being able to cope with the ups and downs and the mistakes that are made.

"I took Denise off to Dubai and sorted things out. That's the end of it."

Denise and Tim explain how they have turned their relationship around while relaxing on holiday in Tunisia with their sons Matthew, 15, and Louis, three.

"We don't just stay together for the sake of the kids," says Denise.

"Obviously, there have been mistakes on both parts. But we are together because we love each other and he is the funniest man in the world.

"He is the least showbiz man I know. He'd rather play darts and have a pint than go to a premiere.

"I just know that this is the man I want

to be with to the end."

When they first met, Denise thought Tim was a "grumpy man" and he thought she was a "blonde airhead". But there was also an instant attraction.

Tim invited Denise to dinner a week later and, ever the romantic, cooked a pie with her name engraved in the crust!

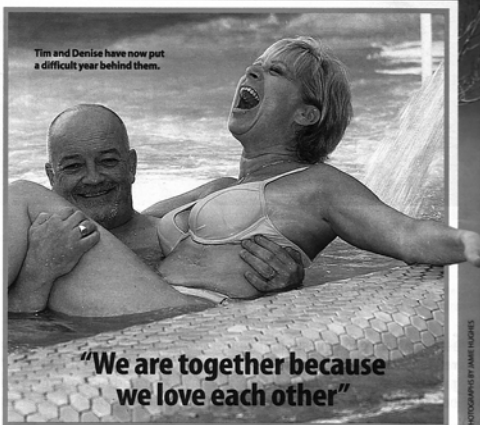
"The way to a man's heart is definitely not through his stomach in this relationship," he laughs.

"My wife can burn a boiled egg! One time I was coming back from filming in Australia and Denise planned a surprise.

"As I came through the door she was standing there in stockings and suspenders – sacrificing something on the cooker, which worried me!

"She'd run me a bath and told me to have a soak while she cooked.

"I got to the top of the stairs when I heard a loud scream. She'd tipped the



Tim and Denise have now put a difficult year behind them.

"We are together because we love each other"

PHOTOGRAPHS BY JAMIE HUGHES

pan up and was covered in cooking oil, which resulted in some nasty burns.

"That's why I do the cooking in the house."

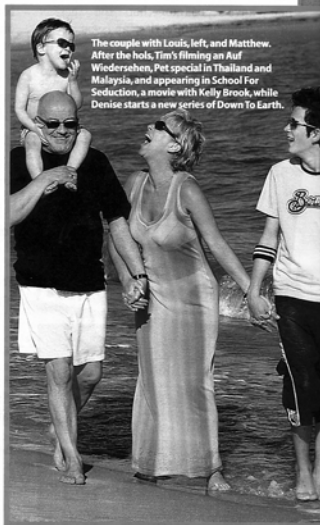
Despite their hectic lifestyles, Tim and Denise are very down-to-earth.

"Matthew is already showing signs of wanting to be in the business and he has been offered acting work," says Denise.

"But we want him to wait until he's finished school and trained in his chosen career.

"He has only seen the upside of the business. He was not around when Tim was booed off at the working men's clubs or when I was performing to three people in a theatre in the middle of nowhere.

"We try and give our kids as much of a normal upbringing as possible."



The couple with Louis, left, and Matthew. After the hols, Tim's filming an *Auf Wiedersehen, Pet* special in Thailand and Malaysia, and appearing in *School For Seduction*, a movie with Kelly Brook, while Denise starts a new series of *Down To Earth*.

● Panorama Holidays is the UK's favourite specialist tour operator to Tunisia. Prices for seven nights' half board at the Royal Azur in Hammamet start from £415 per person. This includes return flights from Gatwick, transfers, accommodation as specified and services of the Panorama resort team. Panorama offers flights from 12 UK airports to Tunisia. To book a holiday call Panoram on 08707 582518 and quote MG. To order a free brochure visit www.panoramaholidays.co.uk or www.panoramabrochures.co.uk, or call 08702 415026.